

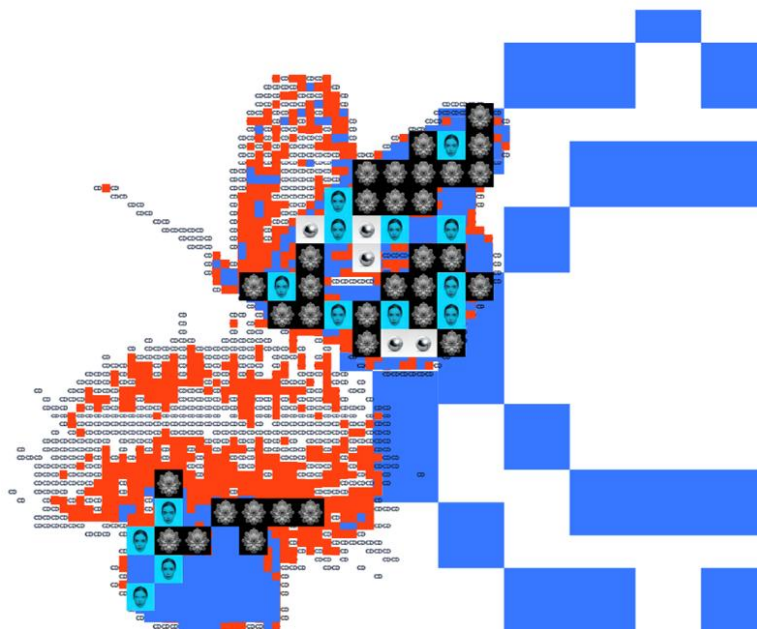
- 
- ⦿ **Author:** IT Services
  - ⦿ **OS:** macOS
  - ⦿ **Version:** 1.0
  - ⦿ **Last reviewed:** 16/01/2026
- 

This document provides step-by-step instructions for configuring access to the **eduroam** wireless network on **macOS** operating systems.

By following these guidelines, users will be able to securely connect using their institutional credentials.

## Contents

Connect to Eduroam .....	2
Remove old Certificates .....	4

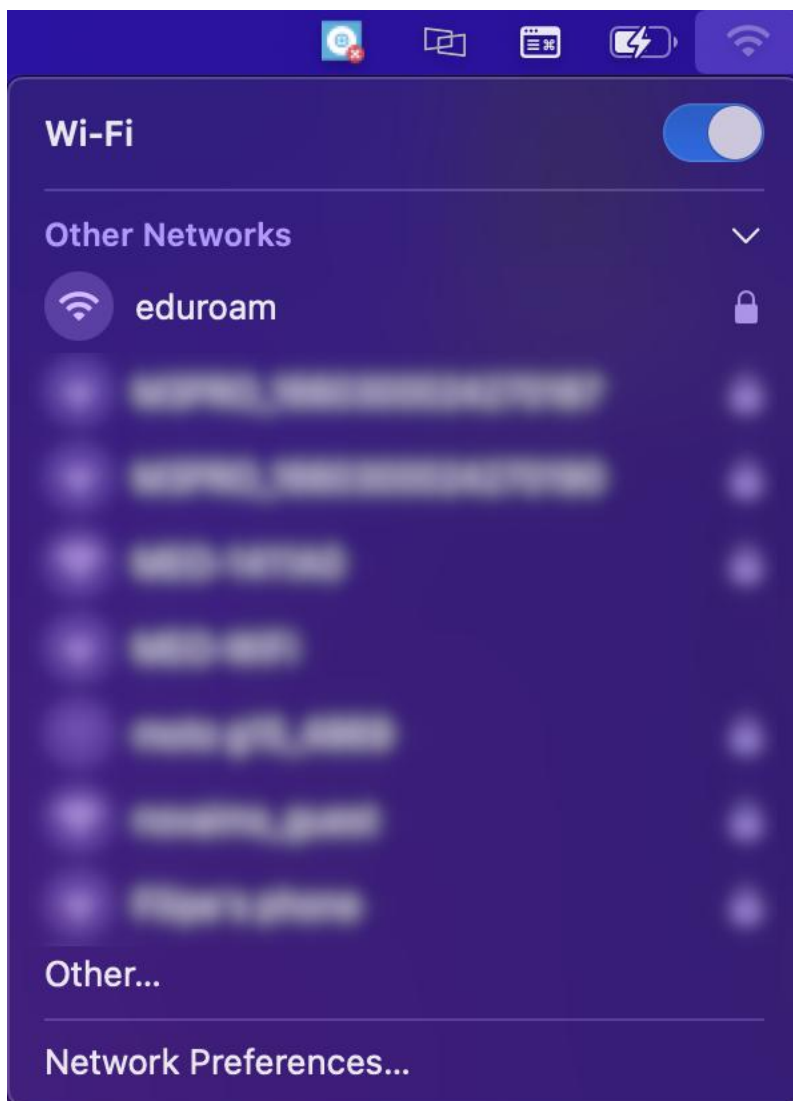


## Connect to Eduroam

Select the icon on the taskbar in the up-right corner to access the internet. The icon will resemble the image shown below.

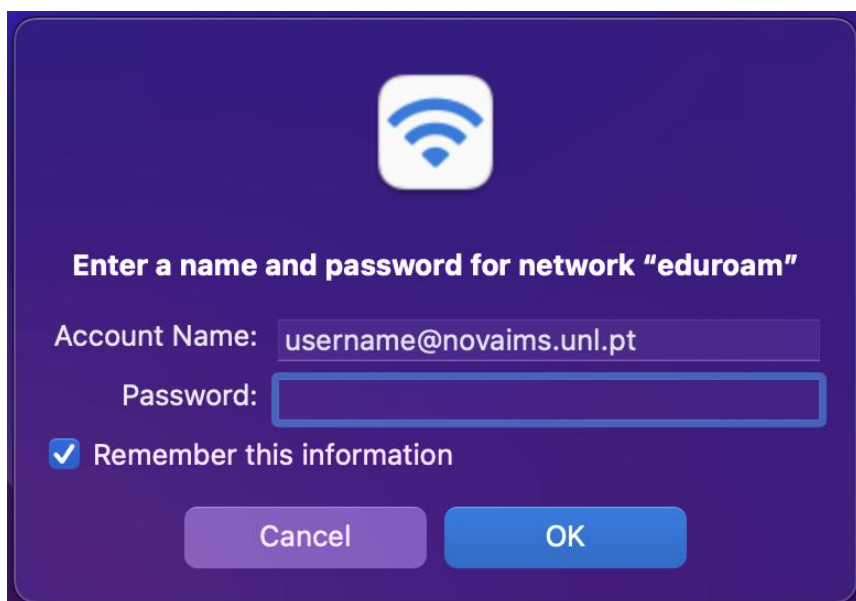


From the list of available networks, select **eduroam**.

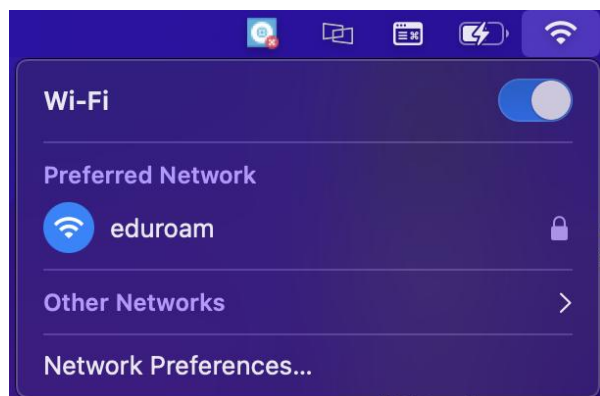


macOS will prompt you for your credentials while connecting to the **eduroam** network.

- ⦿ **username@novaims.unl.pt**
- ⦿ **password**



After completing these steps, you should see a screen similar to the image, indicating that the connection was successful.



**If the connection has been established, the setup is complete and you may close the tutorial.**

**If you are unable to establish the connection, please proceed with the tutorial.**

## Remove old Certificates

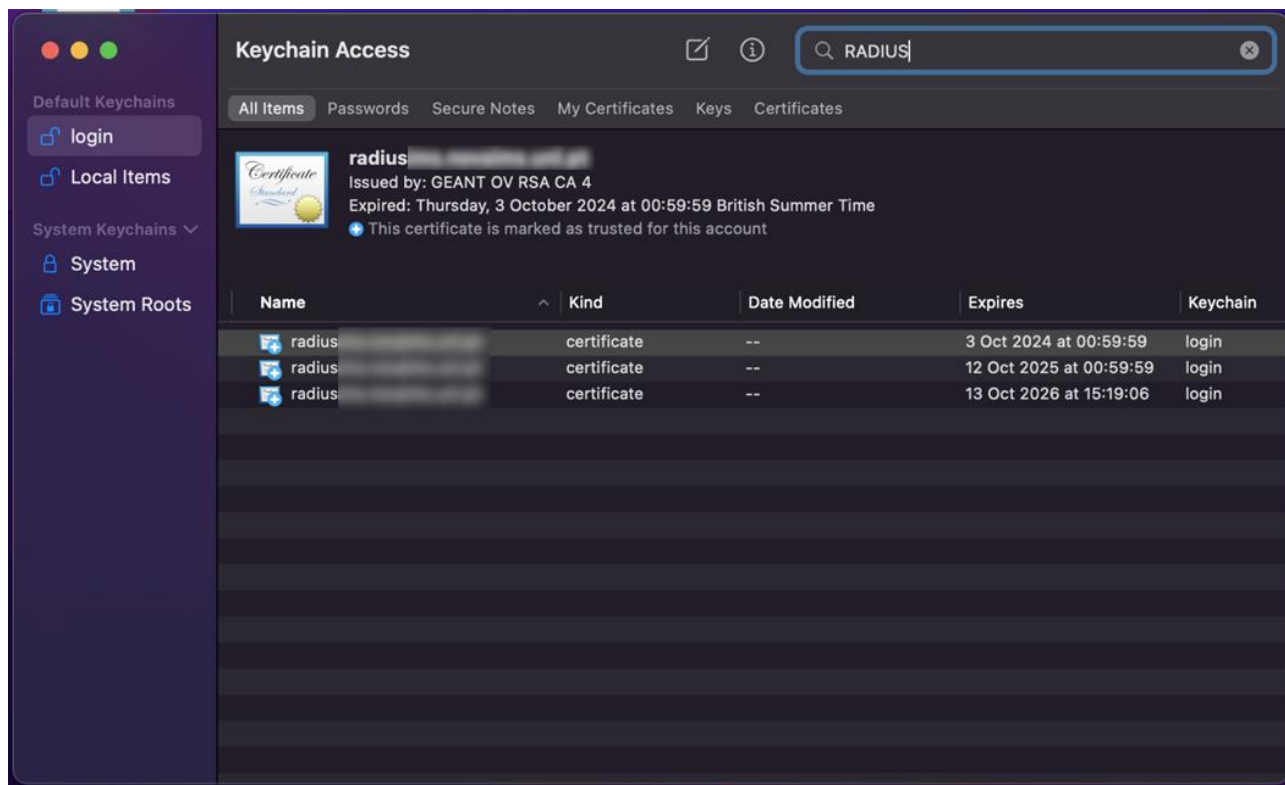
Open [Search](#)



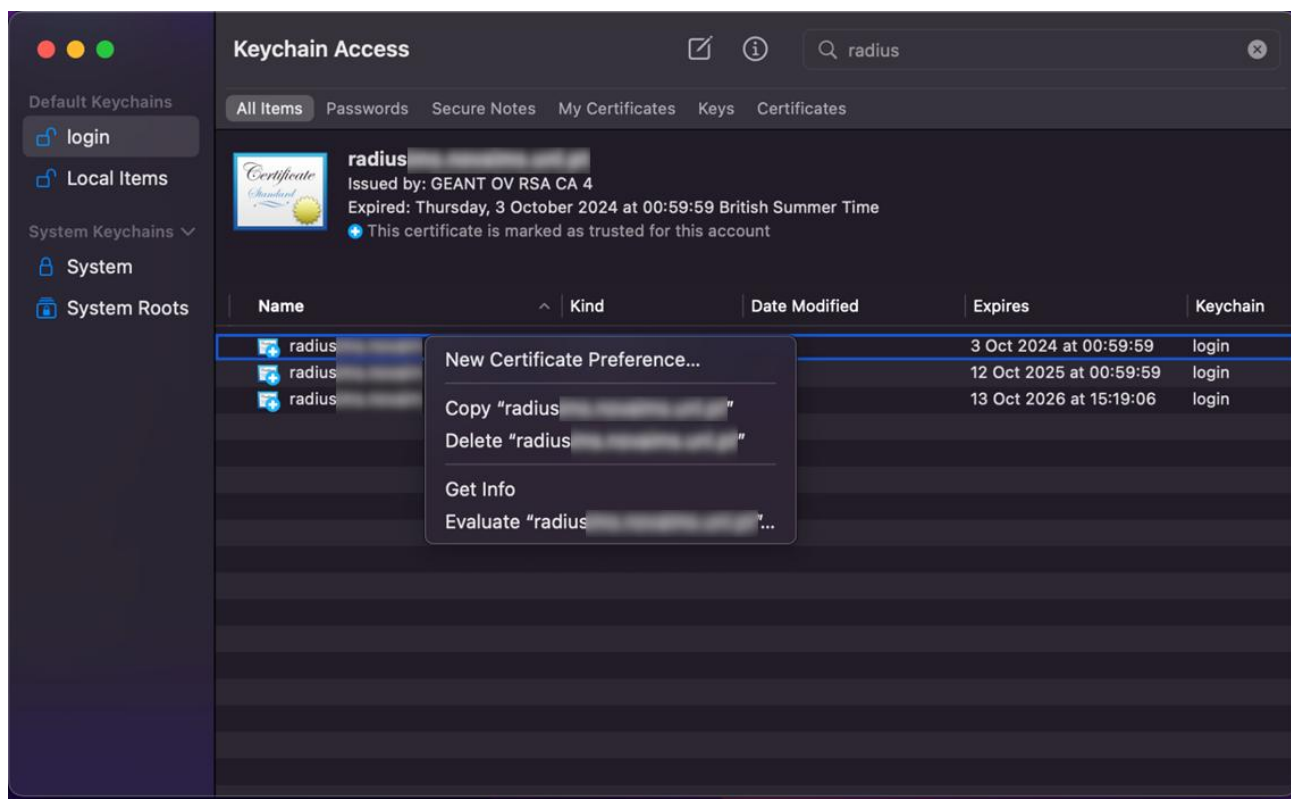
and look for [Keychain Access / Passwords](#), then open the application.



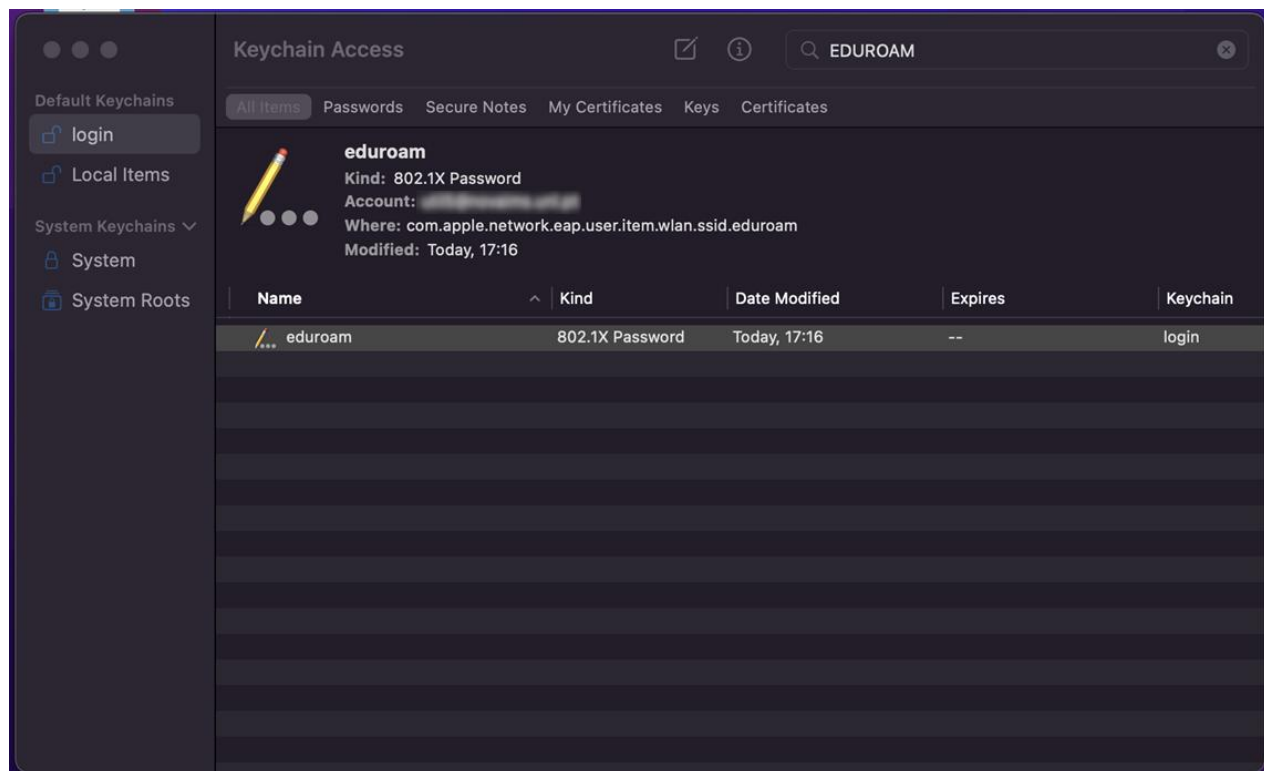
In [Keychain Access / Passwords](#), use the search bar to search for [radius](#).



Right-click on **radius** and select **Delete**.  
Delete any other certificate related to **radius**.



Next, search for **eduroam** and delete any certificates related to **eduroam**, following the same process



Close **Keychain Access / Password** and try connecting to the **eduroam** network again.